

inflatable event displays



**inflatable
media walls**



**inflatable
display
arches**



**inflatable
event dome**



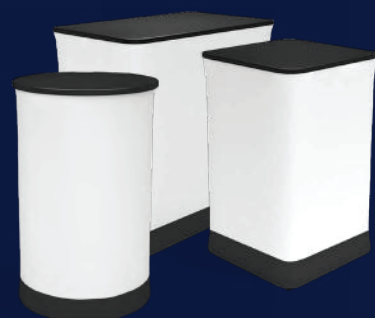
**inflatable
display
towers**



**inflatable
bannerstands**



**inflatable
event
surrounds**





inflatable event furniture



inflatable display counters

5 things you may not know

Ultra-Fast Setup:

Inflatable displays can be set up in minutes with an electric pump, making them one of the quickest large-format branding solutions. No tools or frames are required.

Lightweight Yet Durable:

Made from high-strength TPU and polyester, these displays are easy to transport and tough enough to handle outdoor conditions, including moderate wind and rain.

Air-Sealed Technology:

Once inflated, these displays don't require a continuous air supply, eliminating the need for a constant power source, unlike traditional inflatable structures.

Customizable Shapes & Sizes:

Inflatable displays can be shaped into 3D structures, mascots, or booths, offering endless creative possibilities for branding.

Eco-Friendly Options:

Some models are made from recyclable or biodegradable materials, and fabric covers can be swapped for rebranding, promoting sustainability.

inflatable event displays

Inflatable event displays have surged in popularity due to their versatility, ease of use, and cost-effectiveness. Advancements in technology, particularly dye-sublimated graphics, have revolutionized branding and visibility at events, exhibitions, and activations.

WHY INFLATABLES?

Inflatables offer a lightweight yet durable solution for event branding. Constructed with a triple heat-welded bladder and smart valve technology, these displays require minimal setup and maintain their shape without continuous airflow. Unlike traditional structures, inflatables eliminate the need for rigid frames, making them easy to transport and assemble.

KEY BENEFITS:

- **Memorable Impact:** Unique, organic shapes stand out against conventional displays.
- **360° Branding:** Large surface areas allow for dynamic, eye-catching graphics.
- **Weatherproof:** Suitable for indoor and outdoor use, inflatables withstand various elements.
- **Portability:** Easily packed into compact cases, reducing storage and shipping costs.
- **Quick Setup:** Tool-free assembly means faster installation and breakdown.
- **Customizable Graphics:** Changeable zip-on covers allow for rebranding without new hardware.
- **Innovative Additions:** Options for internal LED lighting enhance visibility and ambiance.

Our range includes inflatable domes, arches, towers, seating, counters, and custom-made solutions. Whether for an exhibition, outdoor event, or brand activation, inflatables provide a high-impact, cost-effective, and visually striking display solution. Elevate your next event with inflatables that blend function, style, and innovation effortlessly.